

MU30G Series

30W, Wide 4:1 Input Range, 1.5KV Isolation, DIP1"x1" Package DC/DC Converters

Features

- ▶ Rated power: 30W Max
- ▶ Input voltage range 4:1
- ▶ Regulated single output
- ▶ High efficiency up to 90%
- ▶ Isolation voltage 1.5KVDC
- ▶ Remote On/Off control
- ▶ Output trimming $\pm 10\%$
- ▶ Operating temperature range: $-40 \sim +85^{\circ}\text{C}$ ambient
- ▶ RoHS compliant
- ▶ Compact 1"x1" package
- ▶ Under voltage, over voltage, over current, and short circuit protection
- ▶ Designed to meet UL/EN/IEC 62368-1
- ▶ 3 year warranty



Overview

The MU30G series are 1.5KV isolated 30Watt DC/DC converters with standard DIP1"x1" footprint. Designed with high efficiency, they operate in a wide temperature range from -40°C to $+85^{\circ}\text{C}$. Other features include wide 4:1 input voltage range, remote on/off control, output trimming, under voltage, over voltage, over current, and short circuit protections. These converters are ideally suitable for battery operated equipment, measurement equipment, telecom, wireless network, industrial control system.

Model Numbers

Model Number	Input Voltage [VDC]			V _{OUT} [VDC]	Output Current [mA]		Efficiency [%] Typ.	Capacitive Load [μF] Max.
	Nom.	Range	*Max.		Max.	Min.		
MU30G-2403	24	9-36	40	3.3	6000	0	84	8000
MU30G-2405	24	9-36	40	5	6000	0	88	6000
MU30G-2412	24	9-36	40	12	2500	0	89	5000
MU30G-2415	24	9-36	40	15	2000	0	89	3000
MU30G-2424	24	9-36	40	24	1250	0	90	1000
MU30G-4803	48	18-75	80	3.3	6000	0	83	8000
MU30G-4805	48	18-75	80	5	6000	0	87	6000
MU30G-4812	48	18-75	80	12	2500	0	88	5000
MU30G-4815	48	18-75	80	15	2000	0	88	3000
MU30G-4824	48	18-75	80	24	1250	0	89	1000

* Only typical models are listed. Other models may be available upon request.

* Input voltage exceed the Max. value may cause permanent damage.

Electrical Specifications

Unless otherwise indicated, specifications are measured at $T_A=25^{\circ}\text{C}$, nominal input voltage, full load after warm up.

Parameters	Conditions	Min.	Typ.	Max.	Unit	Note
Input current Full load	$V_{IN, Nom} = 24\text{V}$ $V_{IN, Nom} = 48\text{V}$	-	1388 710	-	mA	
Input current No load	$V_{IN, Nom} = 24\text{V}$ $V_{IN, Nom} = 48\text{V}$	-	6 8	-	mA	
Reflected ripple current		-	60	-	mA	
Input voltage surge 1 second max	$V_{IN, Nom}=24\text{V}$ $V_{IN, Nom}=48\text{V}$	-0.7 -0.7	-	50 100	VDC	
Startup input voltage	$V_{IN, Nom}=24\text{V}$ $V_{IN, Nom}=48\text{V}$	-	-	9 18	VDC	
Input under voltage shutdown	$V_{IN, Nom}=24\text{V}$ $V_{IN, Nom}=48\text{V}$	5.5 12	7.5 15.5	-	VDC	
Remote On/Off control "Ctrl" pin open or logic high [ON] "Ctrl" pin grounded or logic low [OFF]	Logic high Logic low Ctrl pin current	3.5 0 -	- - 5	12 1.2 8	VDC VDC mA	Positive Logic
Output voltage accuracy	$I_{OUT}=0$ to 100%	-	± 1	± 3	%	
Line regulation Full load, $V_{IN}=V_{IN, Min}$ to $V_{IN, Max}$		-	± 0.2	± 0.5	%	
Load regulation $I_{OUT}=5\%$ to 100% of $I_{OUT, rated}$		-	± 0.5	± 1.0	%	
Output ripple and noise 20MHz bandwidth, peak to peak		-	100	200	mVp-p	
Temperature coefficient	Full load	-	-	± 0.02	%/ $^{\circ}\text{C}$	
Dynamic load response $I_{OUT}=25\% \sim 50\% \sim 75\%$ of $I_{OUT, rated}$	Peak deviation Recovery time	-	± 3 250	± 8 500	% V_{OUT} μS	
Output voltage trim	Trim range	-	-	± 10	% V_{OUT}	
Output over voltage protection		110	140	-	% V_{OUT}	
Output over current protection		110	150	-	% I_{OUT}	
Output short circuit protection		Continuous, automatic recovery				
Input filter		PI filter				
Hot plug		None				

* Operating with less than 5% of rated load will not cause damage to the converters, but the performances data may not fall into the specifications, and stable operating is not assured.

General Specifications

Parameters	Conditions	Min.	Typ.	Max.	Unit	Note
Isolation voltage 1 minute, leakage current 1mA max.	I/P to O/P	1500	-	-	VDC	
Isolation resistance Tested at 500VDC	I/P to O/P	1000	-	-	M ohm	
Isolation capacitance 100KHz, 0.1V	I/P to O/P	-	2000	-	pF	
Switching frequency	Full load	-	330	-	KHz	PWM mode
Operating temperature		-40	-	+85	°C	
Storage temperature		-55	-	+125	°C	
Storage humidity	None condensing	5	-	95	%RH	
Pin soldering resistance 1.5mm away from case for 10 sec		-	-	+300	°C	
Vibration		IEC/EN61373 - Category 1, Grade B				
Cooling method		Free air convection				
Case material		Aluminum alloy				
MTBF	MIL-HDBK-217F	>1,000,000 Hours, T _A =25°C				
Design based on standards		UL/EN/IEC 62368-1				
Safety certifications		EN/IEC 62368-1				
EMC		CISPR32, EN55032 Class B with external circuit IEC/EN61000-4-2, 3, 4, 5, 6				
Size, and Weight		25.4 x 25.4 x 12mm, 21g				

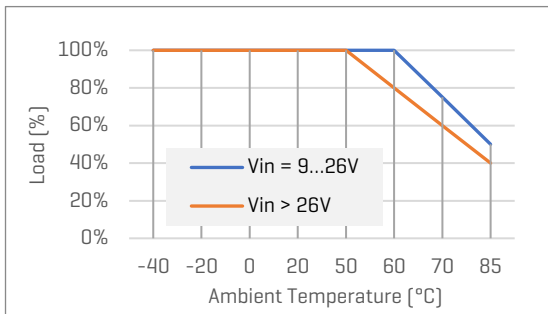
* Switching frequency is measured at full load. The converter reduces the switching frequency at low load [less than 50% load] for better efficiency.

Characteristic Curves

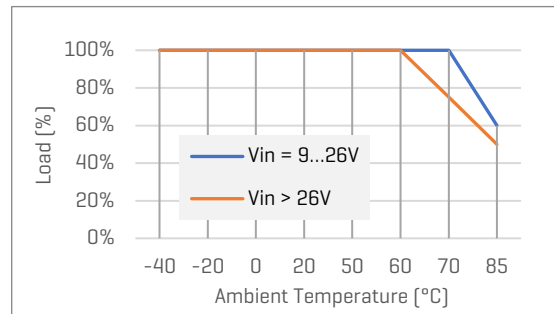
Derating Curve

Load vs Ambient Temperature

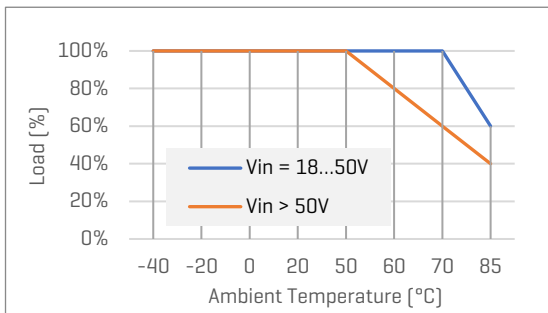
MU30G-24xx, and $V_{OUT}=3.3V, 5V$



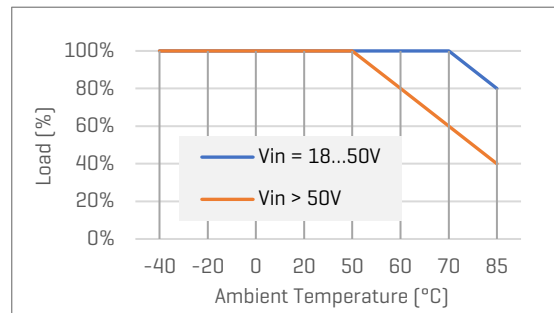
MU30G-24xx, and $V_{OUT}=12 \dots 24V$



MU30G-48xx, and $V_{OUT}=3.3V, 5V$

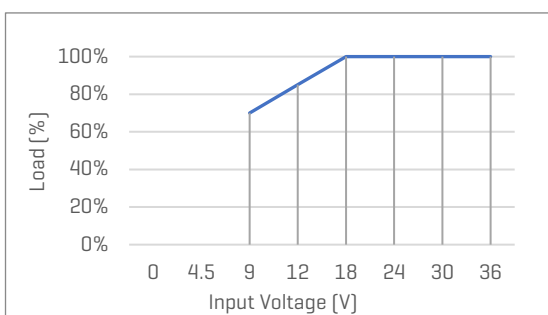


MU30G-48xx, and $V_{OUT}=12 \dots 24V$

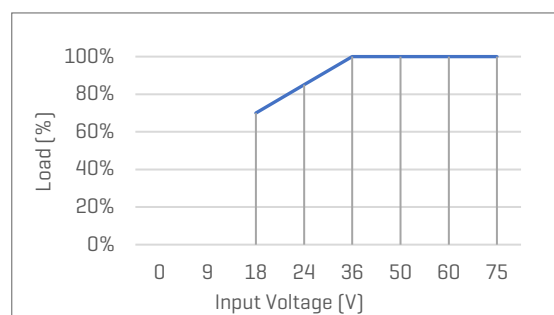


Load vs Input Voltage

MU30G-24xx



MU30G-48xx



Recommended Application Circuit

Typical Application Circuit

*Typical application circuit is to further lower the input and output ripple. It is not required for general use.

*Recommended component specifications are typical values. Excessive external capacitive load may cause startup problem.

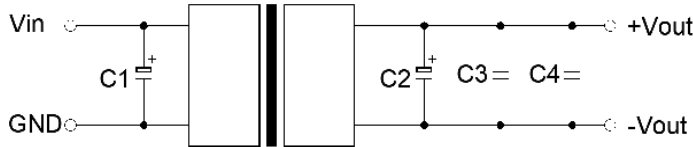


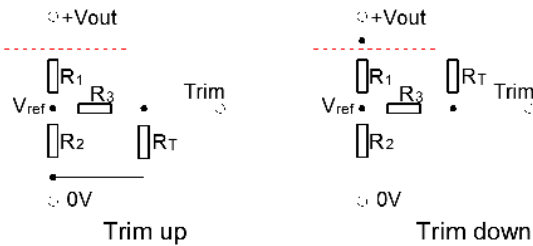
Figure 1. Typical external circuit

[Table 1] Recommended component spec

Items	C1	C2	C3	C4
V _{IN} =24V	100uF	470uF	10uF	0.1uF
V _{IN} =48V	100uF	470uF	22uF	10uF

Circuits for Output Trim

* Items in the red blocks are internal components of the converter.



* The formulas to calculate the desired resistance of Trim resistor "R_T".

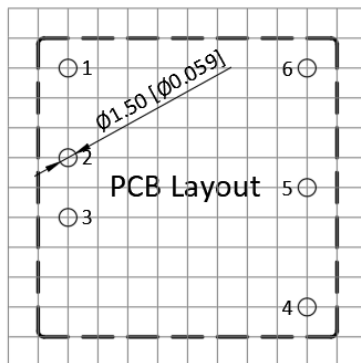
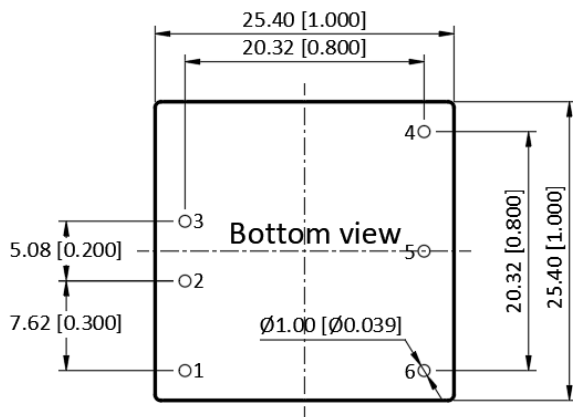
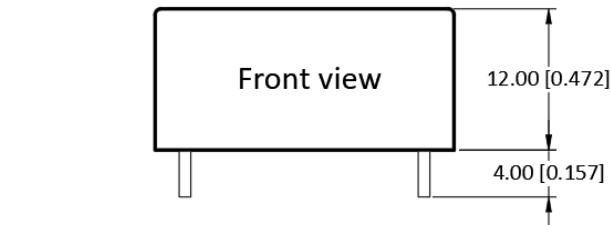
$$\text{Trim up: } R_T = \frac{a R_2}{R_2 - a} - R_3 \quad a = \frac{V_{ref}}{V_{OUT} - V_{ref}} R_1$$

$$\text{Trim down: } R_T = \frac{a R_1}{R_1 - a} - R_3 \quad a = \frac{V_{OUT} - V_{ref}}{V_{ref}} R_2$$

[Table 3] Internal component spec

V _{OUT} [V]	R1 [K Ohm]	R2 [K Ohm]	R3 [K Ohm]	V _{ref} [V]
3.3	10	6.064	13.622	1.24
5	2.4	2.344	17.346	2.5
12	8.2	2.153	21.016	2.5
15	12	2.388	21.016	2.5
24	10	1.158	10.714	2.5

Mechanical Specifications



Pin Definition

Pin #	Single Out	Dual Out
1	Ctrl	Ctrl
2	GND	GND
3	V _{IN}	V _{IN}
4	+V _{OUT}	+V _{OUT}
5	Trim	0V
6	0V	-V _{OUT}

* Unless otherwise specified unit: mm [inch]

* General tolerance: ±0.50 [±0.020]

* Pin thickness: ±0.10 [±0.004]

* Footprint grid 2.54 x 2.54 mm

FAVOTEK LIMITED

#17 Canton Road, Tsim Sha Tsui, Kowloon, Hong Kong
 Tel: +852 8191 6662
 Eml: info@favotek.com

Favotek reserves the right to make changes to the product at any time without notice. Information provided by Favotek is believed to be accurate and reliable. However, no responsibility is assumed by Favotek for its use, nor for any infringements of patents or other rights of third parties which may result from its use.

Want to know more?

For sales, technical support or additional information please get in touch with our team of experts.

ADDITIONAL SERVICES

We provide an end-to-end service

From the initial consultation and sourcing unique components to supplying bespoke solutions including a full design and build process.

Bespoke services

Customised and curated technology solutions across the full range of Conexa Tech products

Sourcing

A full suite of electronics, cable, and mechanical sourcing capabilities

Design & Build

Development and manufacturing services

hello@conexotech.com | +44 118 402 3430

CONEXATECH.COM