

MA10H Series

10W, Encapsulated DIP2"x1" Package DC/DC Converters for Railway Applications

Features

- ▶ Rated power: 10W Max
- ▶ Input voltage 40...160VDC
- ▶ Regulated output
- ▶ High efficiency up to 85%
- ▶ Isolation voltage 2250VDC
- ▶ Low ripple and noise
- ▶ Operating temperature range: -40 ~ +85°C ambient
- ▶ RoHS compliant
- ▶ Standard 2"x1" package
- ▶ Under voltage, over voltage, over current, and short circuit protection
- ▶ Meet IEC/EN 62368-1, EN50155 standards
- ▶ Designed for railway apps
- ▶ 3 year warranty



Model Numbers

Model Number	Input Voltage [VDC]			V _{OUT} [VDC]	Output Current [mA]		Efficiency [%] Typ.	Capacitive Load [uF] Max.
	Nom.	Range	*Max.		Max.	Min.		
MA10H-033	110	40-160	170	3.3	2400	0	76	5400
MA10H-050	110	40-160	170	5	2000	0	80	5400
MA10H-120	110	40-160	170	12	833	0	84	470
MA10H-150	110	40-160	170	15	667	0	84	330
MA10H-240	110	40-160	170	24	417	0	85	100

* Input voltage exceed the Max. value may cause permanent damage.

* Only typical models are listed. Other models may be available upon request.

Electrical Specifications

Unless otherwise indicated, specifications are measured at $T_A=25^{\circ}\text{C}$, nominal input voltage, full load after warm up.

Parameters	Conditions	Min.	Typ.	Max.	Unit	Note
Input current Full load	$V_{OUT}=3.3\text{V}$ Others	-	95 110	-	mA	
Input current No load			3	8	mA	
Reflected ripple current		-	25	-	mA	
Input voltage surge 1 second max		-0.7	-	180	VDC	
Startup input voltage	Full load	-	-	40	VDC	
Startup time	Resistive load	-	10	-	mS	
Input under voltage shutdown		28	33	-	VDC	
Output voltage accuracy	$I_{OUT}=5\%$ to 100%	-	± 1	± 3	%	
Line regulation Full load, $V_{IN}=V_{IN, Min}$ to $V_{IN, Max}$		-	± 0.4	± 1.0	%	
Load regulation $I_{OUT}=5\%$ to 100% of $I_{OUT, rated}$		-	± 0.5	± 1.0	%	
Output ripple and noise	20MHz bandwidth	-	50	100	mVp-p	
Temperature coefficient	Full load	-	-	0.03	%/ $^{\circ}\text{C}$	
Dynamic load response $I_{OUT}=25\%\sim 50\%\sim 75\%$ of $I_{OUT, rated}$	Peak deviation* Peak deviation Recovery time	-	± 3 ± 3 300	± 8 ± 5 500	% V_{OUT} % V_{OUT} μS	* $V_{OUT}=3.3, 5\text{V}$
Output over voltage protection		110	-	160	% V_{OUT}	
Output over current protection		120	-	210	% I_{OUT}	
Output short circuit protection		Continuous, automatic recovery				
Input filter		PI filter				
Hot plug		None				

* Operating with less than 5% of rated load will not cause damage to the converters, but the performances data may not fall into the specifications, and stable operating is not assured.

General Specifications

Parameters	Conditions	Min.	Typ.	Max.	Unit	Note
Isolation voltage 1 minute, leakage current 1mA max.	I/P to O/P I/P & O/P to Case	2250 1600	-	-	VDC	
Isolation resistance Tested at 500VDC	I/P to O/P	1000	-	-	M ohm	
Isolation capacitance 100KHz, 0.1V	I/P to O/P	-	2200	-	pF	
Switching frequency*	Full load	-	300	-	KHz	PWM mode
Operating temperature	See "Derating Curve"	-40	-	85	°C	
Storage temperature		-55	-	125	°C	
Storage humidity	None condensing	5	-	95	%RH	
Pin soldering resistance 1.5mm away from case for 10 sec		-	-	300	°C	
Cooling method		Free air convection				
Case material		Aluminum alloy				
Vibration		IEC/EN61373 - Category 1, Grade B				
MTBF	MIL-HDBK-217F	>1,000,000 Hours, T _A =25°C				
Design based on standards		IEC/EN 62368-1, EN50155				
Safety certifications		IEC/EN 62368-1				
EMC		CISPR32, EN55032 Class B, IEC/EN61000-4-2, 3, 4, 5, 6 EN50155, IEC/EN50121-3-2, EN55016-2-1				
Size, and Weight		50.8 x 25.4 x 12 mm, 41g				

* Switching frequency is measured at full load. The converter reduces the switching frequency at low load [less than 50% load] for better efficiency.

MA10H Series

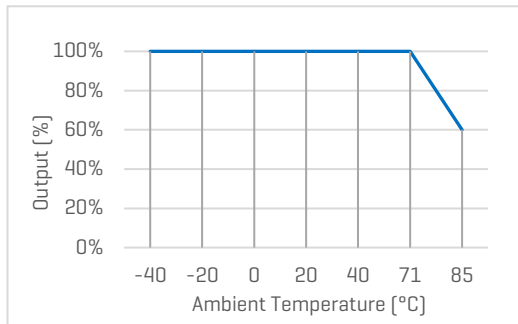
10W, Encapsulated DIP2"X1" Package DC/DC Converters for Railway Applications

Characteristic Curves

Derating Curve

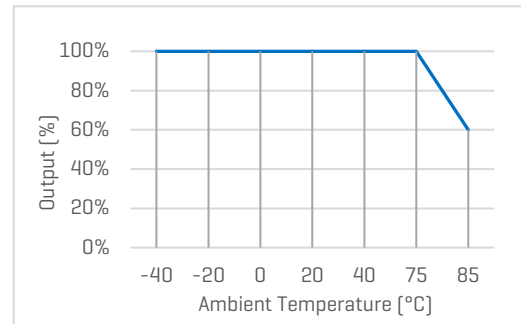
Output vs Ambient Temperature

No heatsink



Output vs Input Voltage

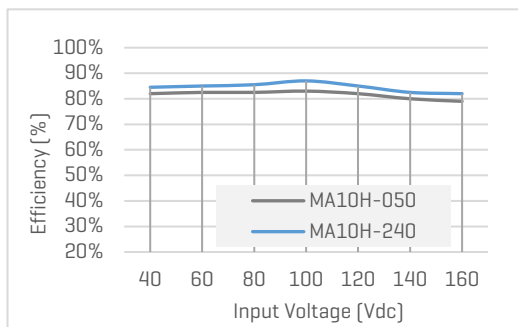
With heatsink



Efficiency Curve

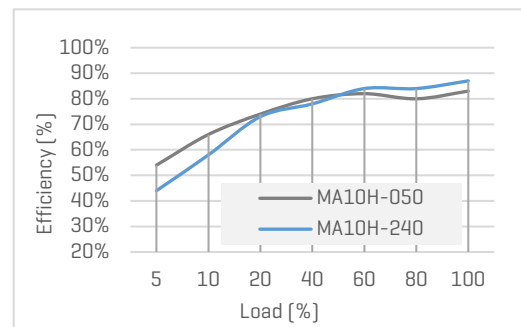
Efficiency vs Input Voltage

Full load



Efficiency vs Load

$V_{IN}=110Vdc$



Recommended Application Circuit

Typical External Circuit

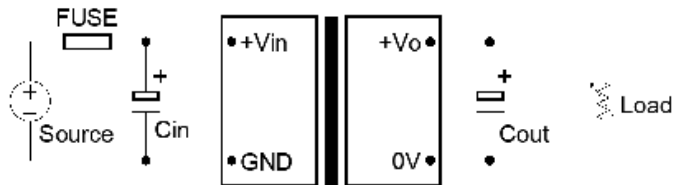


Figure 1. Typical external circuit

Note

*Typical application circuit is to further lower the input and output ripple. It is not required for general use.

*Recommended component specifications are typical values. Excessive external capacitive load may cause startup problem.

[Table 1] Recommended component spec

V_{OUT}	3.3, 5V	12, 15V	24V
C_{OUT}	100uF	47uF	22uF

*Recommended FUSE to be 2A slow blow, and C_{IN} to be 10...47uF

Circuit for EMC Enhancement

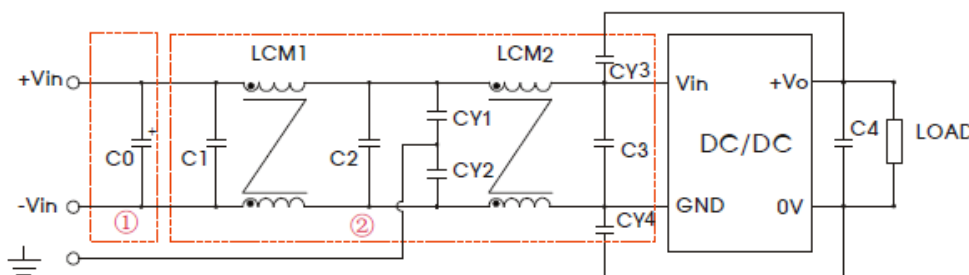


Figure 2: Circuit for EMC Enhancement

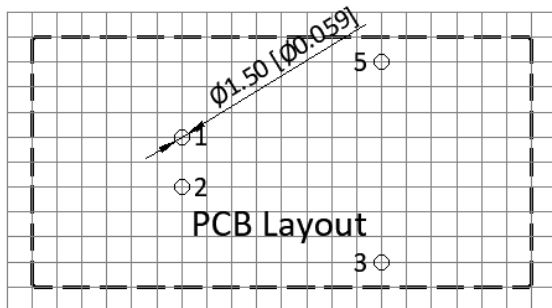
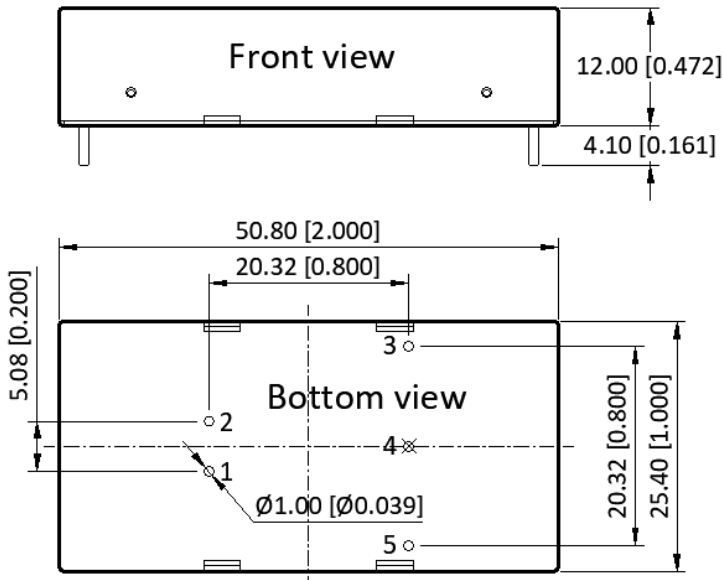
[Table 2] Recommended component specifications

Symbol	Condition	Recommended value
Fuse		2A, slow blow
LCM1		2.2mH
LCM2		1.1mH
C0		100uF, 200V
C1, C2		0.22uF, 250V
C3		10~47uF
C4		Refer to C_{OUT} in Table 1
CY1 ... CY4		1000pF, 400VAC

* Do not use two converters in parallel to supply higher power.

* Consult our technical staff for more information about application.

Mechanical Specifications



Pin Definition

Pin #	Single Out
1	GND
2	V _{IN}
3	+V _{OUT}
4	No Pin
5	0V

* Unless otherwise specified unit: mm [inch]

* General tolerance: ±0.50 [±0.020]

* Pin thickness: ±0.10 [±0.004]

* Footprint grid 2.54 x 2.54 mm

FAVOTEK LIMITED

#17 Canton Road, Tsim Sha Tsui, Kowloon, Hong Kong
 Tel: +852 8191 6662
 Eml: info@favotek.com

Favotek reserves the right to make changes to the product at any time without notice. Information provided by Favotek is believed to be accurate and reliable. However, no responsibility is assumed by Favotek for its use, nor for any infringements of patents or other rights of third parties which may result from its use.

Want to know more?

For sales, technical support or additional information please get in touch with our team of experts.

ADDITIONAL SERVICES

We provide an end-to-end service

From the initial consultation and sourcing unique components to supplying bespoke solutions including a full design and build process.

Bespoke services

Customised and curated technology solutions across the full range of Conexa Tech products

Sourcing

A full suite of electronics, cable, and mechanical sourcing capabilities

Design & Build

Development and manufacturing services

hello@conexotech.com | +44 118 402 3430

CONEXATECH.COM